



ASCO - 3/2 ANGLE-SEAT VALVE 1/2"-2"

E390B002

Angle seat valve 1/2" NC 3/2

- Normally closed/open
- Working pressure 0 to 16 bar
- Housing in bronze
- Non-sensitive to dirt

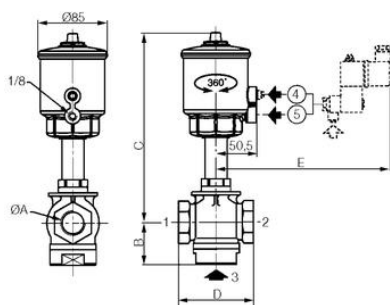
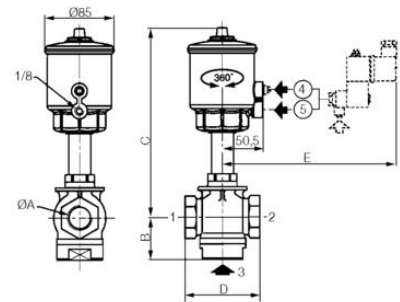
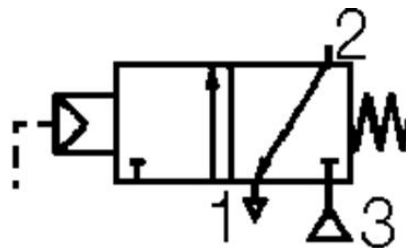
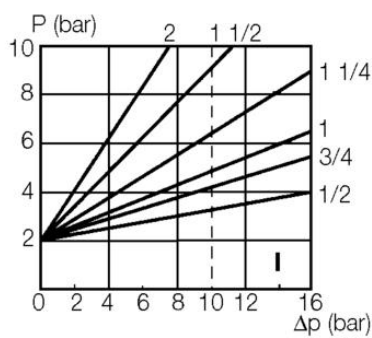


PRODUCT DESCRIPTION

TECHNICAL DATA

Approvals	SIL2
Connection	1/2 BSP
Connection air	1/8 BSP
Differential air pressure max	16 bar
Differential oil pressure max	16 bar
Differential pressure min	0 bar
Differential steam pressure max	10 bar
Differential water pressure max	16 bar
Function 1	3/2
Function 2	Normally Closed (SPST)
Material body	Bronze
Material box stuffing	PTFE flask filled
Material controls	Fiberglass reinforced polyamide
Material of seals	PTFE
Material packing	Brass
Material piston rod	Stainless steel

Material piston rod seal	Stainless steel
Material piston seal	PTFE
Material scraping seal	FPM
Pilot pressure max	10 bar
Pilot pressure min	3 bar
Temperature of media from	-10 °C
Temperature of media to	184 °C
Temperature operational max	60 °C
Temperature operational min	-10 °C
Throughput	15 mm
Type of valve	Seat valve
Weight	1,6 kg
Viscosity max	600 cSt



ØA	B	C	D	E
1/2	39	198	68	153
3/4	44	203	84	153
1	52	212	92	153
1 1/4	57	237	110	153
1 1/2	61	244	125	153
2	69	253	145	153